

Lot 4158 Willowdale Estate, East Leppington **\$799,500** **Leppington**



For Sale

 4  2.5  2  22

A lifestyle that combines the best of both worlds is waiting for you at Willowdale. Close to major public amenities and services but a world away from the stresses of everyday life, Willowdale has 25 hectares of open space and kilometres of bike and walking paths for you to enjoy. With a proposed school and planned retail centre, this thriving corner of south-west Sydney is the ideal place to settle with a friendly village feel and easy access to public transport and major roads.

- Quality Lifestyle Key Inclusions
- Fixed price site costs and piling to slab
- Basic requirements including Slimline Rainwater Tank
- Gas connections (includes gas hot water system, gas appliances and bayonet where available)
- Council, Occupational Health and safety and statutory requirements
- Flat Roof Tiles
- Westinghouse Stainless Steel Appliances
- 20mm Caesarstone to Kitchen Benchtops
- Laminated flooring to entry hallway and kitchen, carpet to remainder of dwelling
- Tiling to Alfresco and Porch
- Moroka feature to front façade
- Colour concrete Driveway and Front path
- Brickpier Letterbox

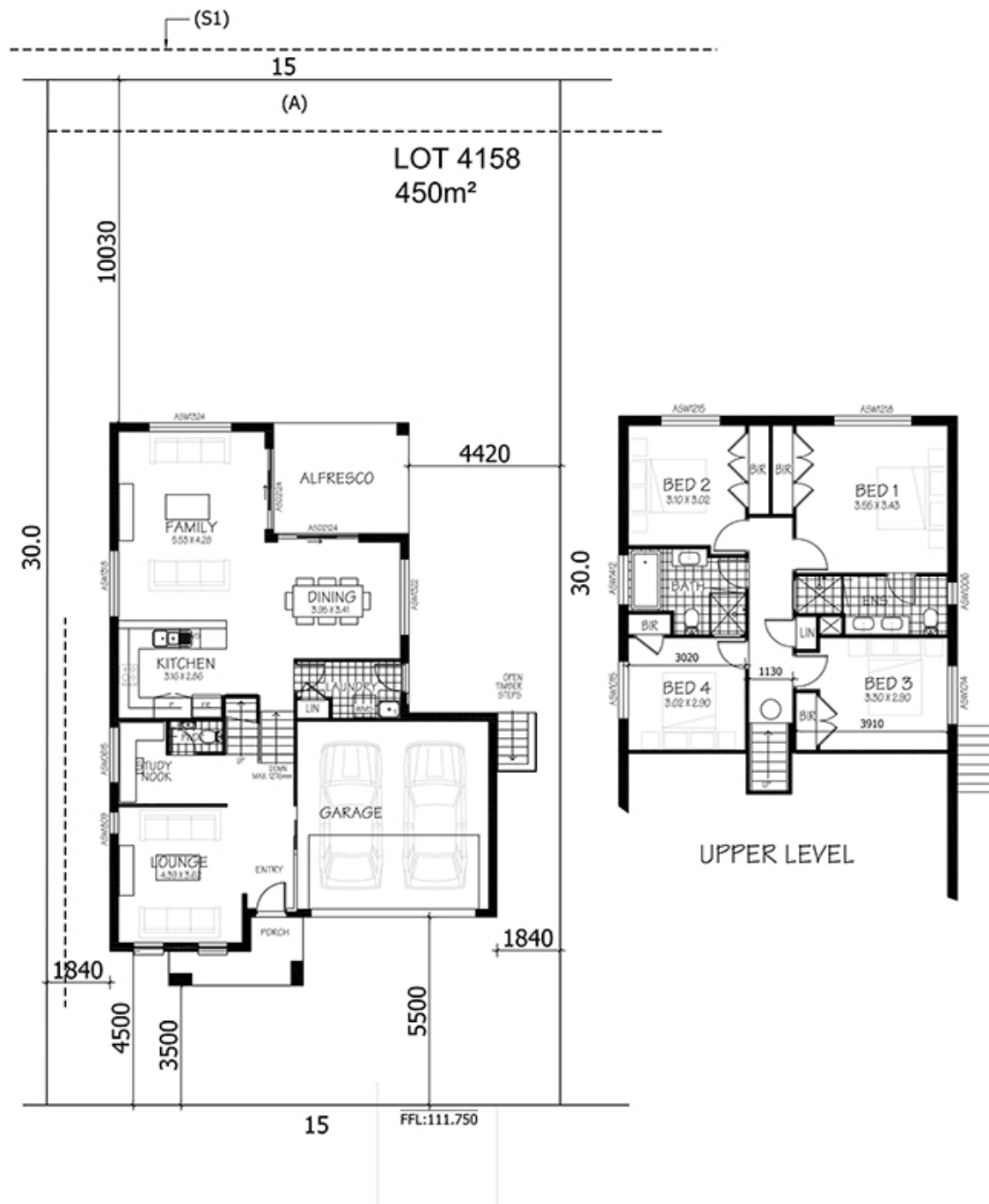
Drain ducted Air conditioning
REAL FAMILIES
REAL SOLUTIONS

PHONE 1300 223 345
RAWSONHOMES.COM.AU



RAWSON
HOMES
— EST 1978 —

Lot 4158 Willowdale Estate, East Leppington Leppington



ONE REAL PRICE

Our commitment to real value is built into every single Rawson Home.

PHONE 1300 223 345

RAWSONHOMES.COM.AU



**RAWSON
HOMES**
— EST 1978 —

Disclaimer: Fixed for all lots with up to 1m of fall across the site. Real Price Packages are subject to availability, developers design review panel, bushfire requirements & statutory approval. One Real Price to be determined upon tender requests for individual lots and may vary due to site conditions and statutory authority requirements. Whilst every effort is made to provide accurate information images are for illustrative purposes and intended to provide a visual guide only. Refer to individual contracts for final details. Details are correct at time of printing and subject to change without notice or obligation. Builders Lic No. NSW 33493C. ACT 19936252B. ABN 67 053 733 841.