

Lot 401 Darling Street, Eglinton  
**Bathurst**

**\$534,200**



## METFORD

 4  2  2  28.7

Located in the beautiful Central Tablelands, Eglinton, Bathurst is situated on the western edge of the Great Dividing Range in the Macquarie River plain, Bathurst has a rich history but is also a modern town with many urban conveniences, easy access to major highways and impressive local public transport. • 15 minutes to Mount Panorama Race Circuit • Green belt buffer zone • Cycleways • Eglinton Primary School • 7 minutes to Mitchell Highway • 8 minutes to Bathurst Base Hospital

- Inclusions:
- Quality Key Inclusions
- Gas connections (includes gas hot water system, gas appliances and bayonet where available)
- Daikin Ducted Air-Conditioning
- Laminate flooring to Entry, Hallway and Kitchen, carpet to remainder of dwelling
- Westinghouse Stainless Steel Appliances including built-in dishwasher
- 20mm Caesarstone kitchen benchtops
- Driveway and front path
- HYNE T2 Blue Termite resistant framing
- RHEEM Metro 5 star Continuous 26L gas water mounted hot water system

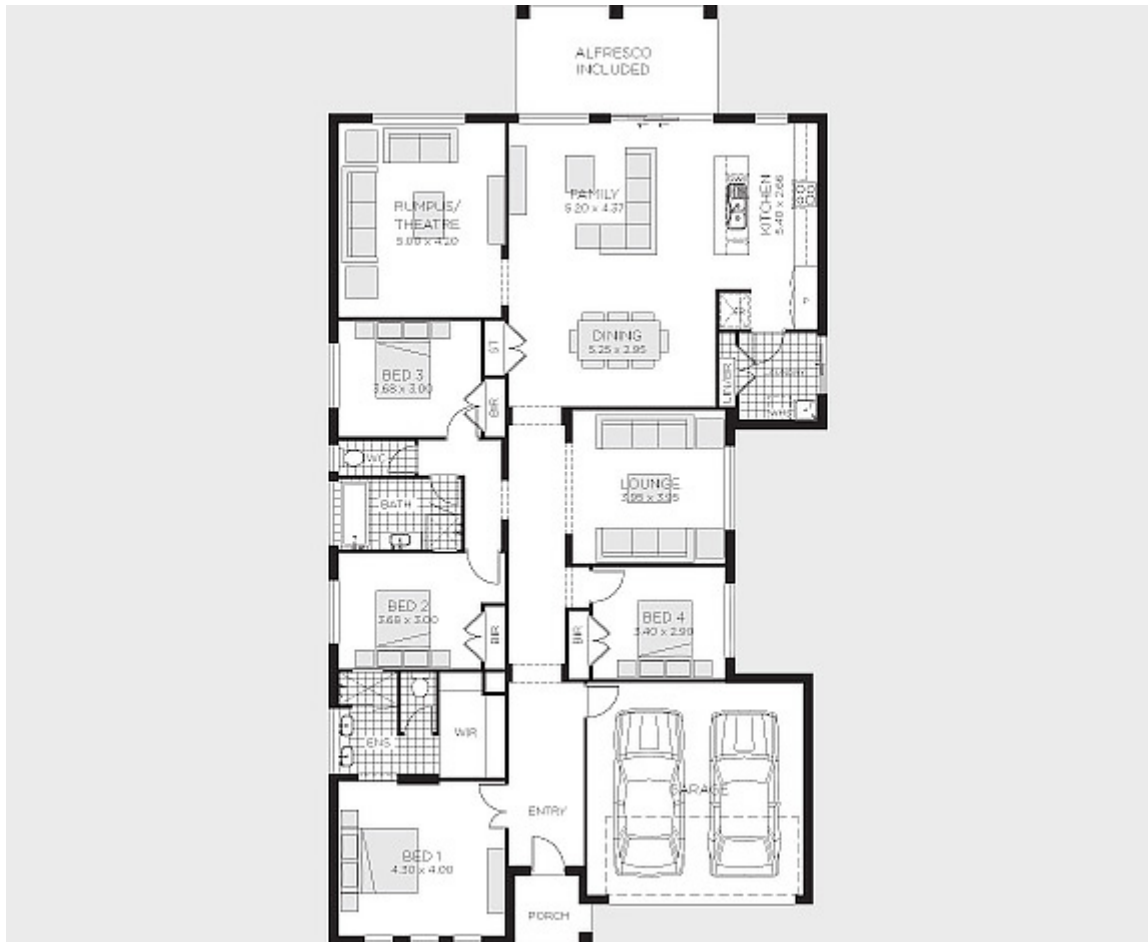
**REAL FAMILIES  
REAL SOLUTIONS**

**PHONE 1300 223 345  
RAWSONHOMES.COM.AU**



**RAWSON  
HOMES**  
— EST 1978 —

# Lot 401 Darling Street, Eglinton **Bathurst**



## ONE REAL PRICE

Our commitment to real value is built into every single Rawson Home.

**PHONE 1300 223 345**

**RAWSONHOMES.COM.AU**



**RAWSON  
HOMES**  
— EST 1978 —

Disclaimer: Fixed for all lots with up to 1m of fall across the site. Real Price Packages are subject to availability, developers design review panel, bushfire requirements & statutory approval. One Real Price to be determined upon tender requests for individual lots and may vary due to site conditions and statutory authority requirements. Whilst every effort is made to provide accurate information images are for illustrative purposes and intended to provide a visual guide only. Refer to individual contracts for final details. Details are correct at time of printing and subject to change without notice or obligation. Builders Lic No. NSW 33493C. ACT 19936252B. ABN 67 053 733 841.