

# Lot 323 Horizon Estate Marsden Park

# \$829,100



## KEMPSEY

 5  2.5  2  28.4

Achieve something unique at a well-connected Sydney address. An emerging property hotspot, Horizon Estate at Marsden Park is an exceptional residential community offering affordable relaxed living at its best. Located at the centre of Sydney's North West growth corridor, the estate provides a real sense of freedom born out of wide open spaces! A brand new community catering for every lifestyle, escape the bustling city and invest in your future at Horizon. The ultimate blend of city and country, Marsden Park is a welcoming neighbourhood with a noticeable village-like atmosphere. An exciting planned community with hectares of open space to enjoy, there are plenty of industry, leisure and transport right on your doorstep!

- Fixed price site costs
- 20mm stone benchtop to kitchen
- Daikin ducted air conditioning
- Westinghouse stainless steel appliances
- Timber laminate flooring to entry and kitchen with carpet to remainder
- Remote control garage opener
- BASIX requirements
- Driveway and front path
- Timber fencing
- Turf to front yard
- Letter box and clothesline
- Feature brick to front facade

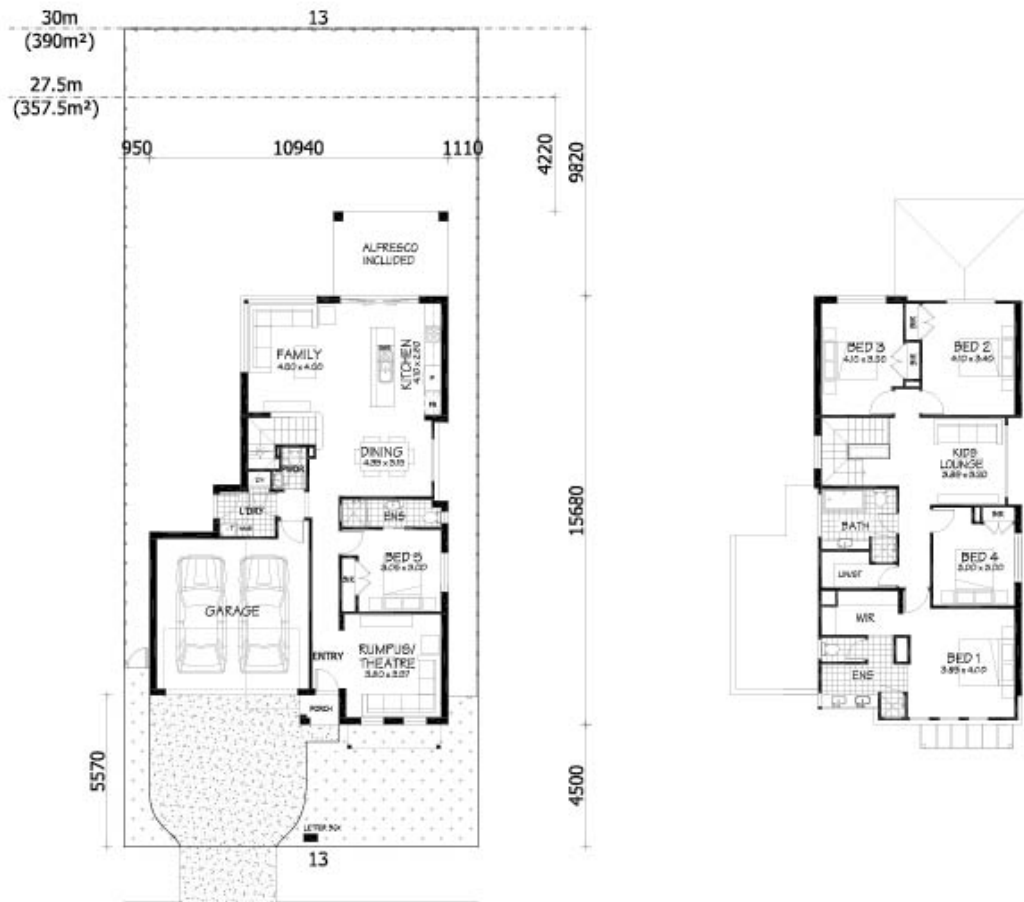
**REAL FAMILIES  
REAL SOLUTIONS**

**PHONE 1300 225 345  
RAWSONHOMES.COM.AU**



**RAWSON  
HOMES**  
— EST 1978 —

# Lot 323 Horizon Estate Marsden Park



## ONE REAL PRICE

Our commitment to real value is built into every single Rawson Home.

PHONE 1300 223 345

RAWSONHOMES.COM.AU



**RAWSON  
HOMES**  
— EST 1978 —

Disclaimer: Fixed for all lots with up to 1m of fall across the site. Real Price Packages are subject to availability, developers design review panel, bushfire requirements & statutory approval. One Real Price to be determined upon tender requests for individual lots and may vary due to site conditions and statutory authority requirements. Whilst every effort is made to provide accurate information images are for illustrative purposes and intended to provide a visual guide only. Refer to individual contracts for final details. Details are correct at time of printing and subject to change without notice or obligation. Builders Lic No. NSW 33493C. ACT 19936252B. ABN 67 053 733 841.