

# Lot 20-31 Seaside Fern Bay

# \$634,200



## SEABREEZE

 3  2  2  18.8

A truly affordable coastal lifestyle, live a coastal sea change lifestyle without giving up modern conveniences. Fern Bay is the ideal place to experience sand between your toes at home before breakfast and to see local wildlife from your kitchen window. A vibrant cosmopolitan City with a rich maritime history, Newcastle and surrounding areas offer plenty of restaurants, shopping as well as being one of the best places in the world to see dolphins in the wild! With the Pacific Highway at your doorstep.

- Quality Lifestyle Inclusions
- Standard site costs and piling to slab
- Gas connections (includes gas hot water system, gas appliances and bayonet where available)
- Council, Occupational Health and Safety and statutory requirements
- Westinghouse Stainless Steel Appliances
- Laminate flooring to entry hallway and kitchen, carpet to remaining of dwelling
- NBN provision
- Driveway and front path
- Basix requirements

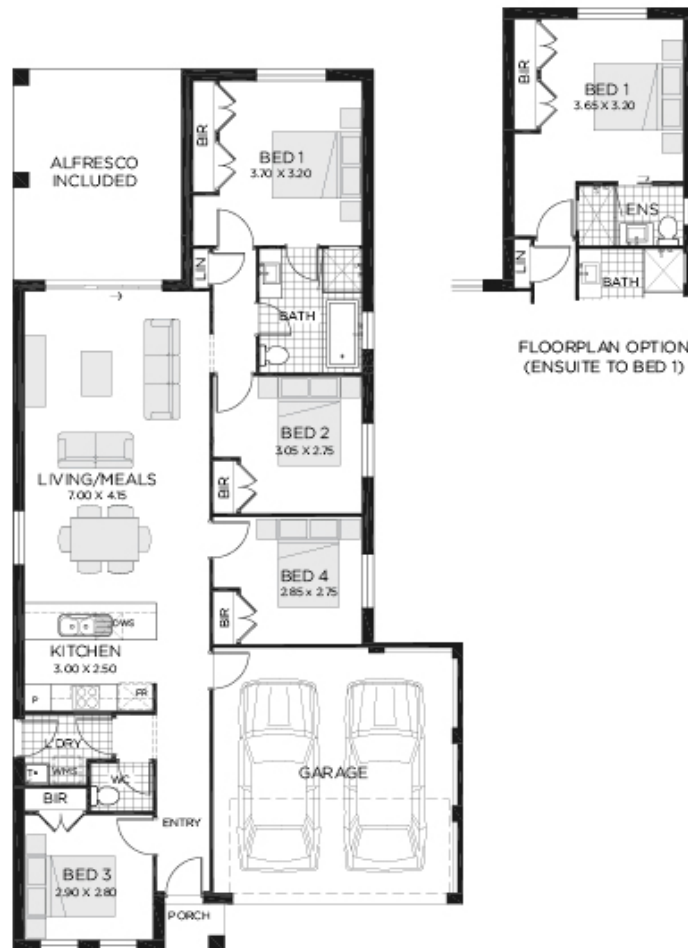
**REAL FAMILIES  
REAL SOLUTIONS**

**PHONE 1300 223 345  
RAWSONHOMES.COM.AU**



**RAWSON  
HOMES**  
— EST 1978 —

# Lot 20-31 Seaside **Fern Bay**



## ONE REAL PRICE

Our commitment to real value is built into every single Rawson Home.

**PHONE 1300 223 345**

**RAWSONHOMES.COM.AU**



**RAWSON  
HOMES**  
— EST 1978 —

Disclaimer: Fixed for all lots with up to 1m of fall across the site. Real Price Packages are subject to availability, developers design review panel, bushfire requirements & statutory approval. One Real Price to be determined upon tender requests for individual lots and may vary due to site conditions and statutory authority requirements. Whilst every effort is made to provide accurate information images are for illustrative purposes and intended to provide a visual guide only. Refer to individual contracts for final details. Details are correct at time of printing and subject to change without notice or obligation. Builders Lic No. NSW 33493C. ACT 19936252B. ABN 67 053 733 841.