

Lot 1279 Gregory Hills Gregory Hills

\$772,200



ACTON

 4  2  1  23.66

Located in Sydney's Macarthur Region, Gregory Hills is a newly established community serving the everyday needs of its growing community. Close to major amenities, schools and essential services, Gregory Hills boasts unsurpassed district views to the Blue Mountains and beyond. Soon to feature a brand new shopping centre with plenty of food and entertainment options, Gregory Hills also has excellent transport connectivity. With direct connections to the M5 and a number of major railway stations, you will be well connected to Sydney and beyond.

- Fixed price sites costs
- 20mm Caesarstone benchtop to kitchen
- 14 KW Daikin ducted air conditioning with 2 zones
- Westinghouse stainless steel appliances
- Timber laminate flooring to living, dining, kitchen and entry hallway; carpets to remainder
- Floor tiling to alfresco & patio
- B&D Colorbond panelift door with remote control operation
- BASIX requirements including rainwater tank
- Driveway and front path

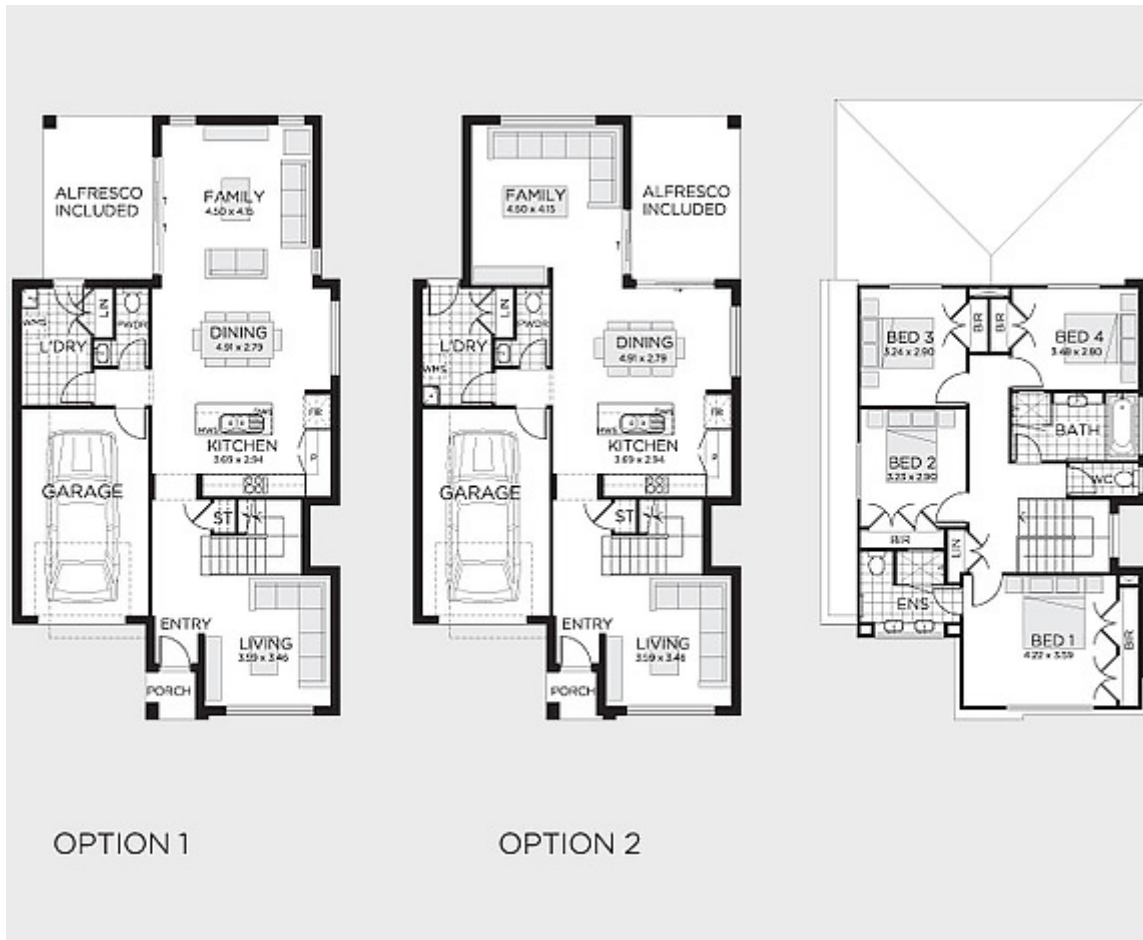
**REAL FAMILIES
REAL SOLUTIONS**

**PHONE 1300 223 345
RAWSONHOMES.COM.AU**



**RAWSON
HOMES**
— EST 1978 —

Lot 1279 Gregory Hills **Gregory Hills**



ONE REAL PRICE

Our commitment to real value is built into every single Rawson Home.

PHONE 1300 223 345

RAWSONHOMES.COM.AU



**RAWSON
HOMES**
— EST 1978 —

Disclaimer: Fixed for all lots with up to 1m of fall across the site. Real Price Packages are subject to availability, developers design review panel, bushfire requirements & statutory approval. One Real Price to be determined upon tender requests for individual lots and may vary due to site conditions and statutory authority requirements. Whilst every effort is made to provide accurate information images are for illustrative purposes and intended to provide a visual guide only. Refer to individual contracts for final details. Details are correct at time of printing and subject to change without notice or obligation. Builders Lic No. NSW 33493C. ACT 19936252B. ABN 67 053 733 841.