



WOODFORD

HOUSE & LAND PACKAGE

 4  2.5  2 LOT | 288m²

Lot 360 Horizon, Marsden Park

LOCATION & LIFESTYLE

Invest in the future and enjoy an easy, comfortable life in Horizon Estate. With Riverstone and Schofields train stations a short drive away, your new home will be surrounded by an abundance of retail, education and leisure options.

HOME DESIGN

This design is perfectly suited to square corner blocks and utilises these spaces to their full potential. The façade is designed to present its prominent features to the two sides facing the street. The efficiently designed interior ensures maximum useful internal space given the compact land size.

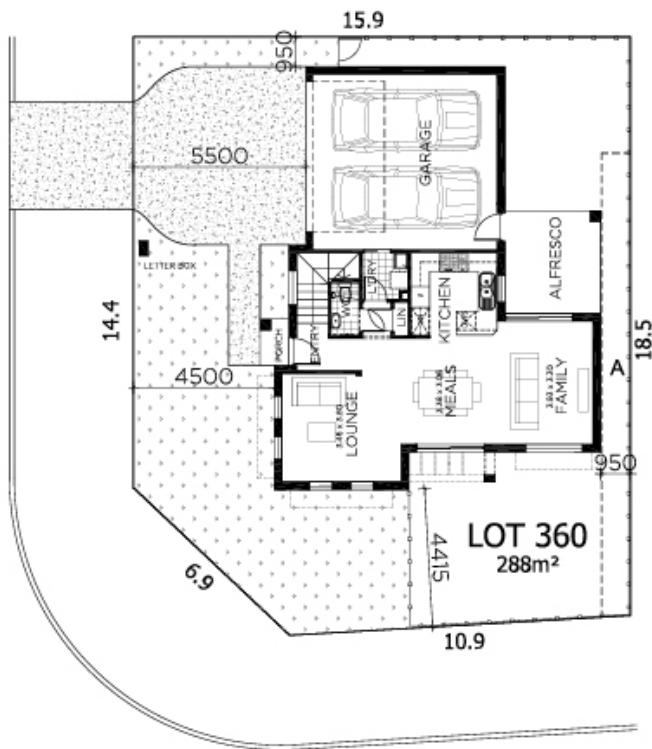
PACKAGE INCLUSIONS

- Fixed price site costs
- 20mm Caesarstone benchtop in kitchen
- 14 KW Daikin ducted air conditioning with two zones
- Westinghouse stainless steel appliances
- Timber laminate flooring to living, dining, kitchen and entry hallway; carpets to remainder
- Floor tiling to alfresco & patio
- B&D Colorbond panelift door with remote control operation
- BASIX requirements including rainwater tank
- Driveway and front path
- Landscape package includes timber fencing, turf to front yard & rendered finish letterbox.
- Studio electrical appointment included
- Extensive range of external & internal colour schemes

1300 223 345
rawsonhomes.com.au



**RAWSON
HOMES**
— EST 1978 —



Ground floor



First floor

Lot 360 Horizon, Marsden Park

WOODFORD

TOTAL 21.35sq

 4  2.5  2 LOT | 288m²

1300 223 345
rawsonhomes.com.au



Disclaimer: Fixed for all lots with up to 1m of fall across the site. Real Price Packages are subject to availability, developers design review panel, bushfire requirements & statutory approval. One Real Price to be determined upon tender requests for individual lots and may vary due to site conditions and statutory authority requirements. Whilst every effort is made to provide accurate information images are for illustrative purposes and intended to provide a visual guide only. Refer to individual contracts for final details. Details are correct at time of printing and subject to change without notice or obligation. Builders Lic No. NSW 33493C. ACT 19936252B. ABN 67 053 733 841.